

DEVOTED SOLELY TO

AMATEUR RADIO



EDITED AND PUBLISHED BY: BILL McNATT, W 9 N F K, FRANKLIN PARK, ILLINOIS

(Copyrighted 1950 by William E. McNatt, Jr.)

- * W5CVW, FORT WORTH, TO W4HHK, COLLIERVILLE, FIRST TEXAS-TENNESSEE QSO ON 2!
- * "THE U H F WORLD" PRESENTS 412MC. PROPAGATION DATA FOR 86 MILE PATH. PAGE 8.
- * W7COWZ, W0FRQ AND W0ELL WANT SCHEDULES ON 7MC. FOR VHF COORDINATION. PAGE 10.
- * "THE VHF NEWS" COMPLETES 4 YEARS PUBLICATION; STILL NEEDS SUPPORT. PAGE 7.

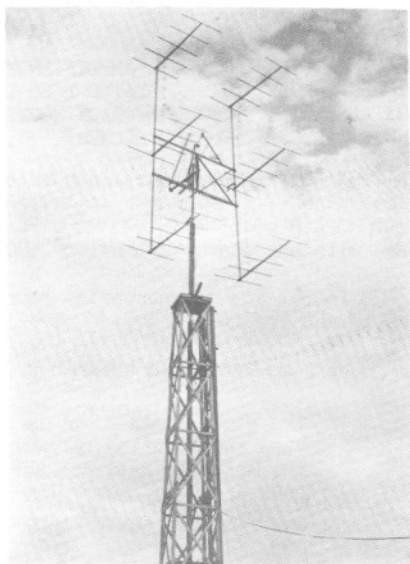
TWO METERS, LAST MONTH . . .

The column is written tightly; see "Corner Reflections" for the reason.

On May 22d, Paul Wilson, W4HHK, Collierville, Tenn., and Bill Bonnell, W5CVW, Dallas, Texas, wrapped up the first 2-meter contact between the two states at about 2156 CST, using c.w. Some QSB existed, but the QSO was a good one. After signing at 2229, another contact, on phone, was made at 2252. The QSO was short, however, because of abrupt fading that developed.

W5CVW was first heard by W4HHK when CVW was enjoying an S9 plus QSO with W5ML, Oil City, La., and W4HHK was using only a 4-element parasitic array 62 feet high. Following the W5CVW QSO, W4HHK heard W5MJC, Texarkana, Arkansas, calling him; Paul answered, but the band must have folded abruptly because W5MJC, on phone, wasn't heard again.

The Dallas Champion of Horizontal, W5CVW, had quite an evening for himself. At 9PM, after doing some anti-TV work on the final, Bill tested on 2 and habitually tuned the band. At 144.1 Mc., the S meter went off scale, and a voice announced that W5ML was calling W5CVW. In rapid succession, W5MWW, Texarkana, W5DXB, Vivian, La., W5MJC, Texarkana, W5?? New Boston, Tex., W5ERD, Texarkana, W5NQM, Hospton, La., were logged. Then came a phone call from W5JTI, Jackson, Miss., who was pulling W5CVW in. A partial, but not too solid contact resulted. The evening closed with a contact with W5ML, after midnight.



W2NLY'S NEW 30-ELEMENT, FLIP-FLOP BEAM HAVING 4DB GAIN OVER CONVENTIONAL 32-ELEMENT $\frac{1}{2}$ -WAVELENGTH ARRAY.

Signals were still S9 plus. So, Bill's "iron curtain" around Dallas on 2 was shattered. Quoting Bill, "For once, I was home and on the air when the lid blew off! Are there any verticals left on 2 in Texas?" The distance: 450 miles, roughly.

The best bet for the Summertime VHF Convention, in the midwest, is the TURKEY RUN, IND., meeting on July 30. (Continued on Page 6.)

ATTENTION MOBILE HAMS

COMPLETE MOBILE PACKAGE - NOTHING ELSE TO BUY. OUTSTANDING MOBILE SIGNALS USE MOTOROLA EQUIPMENT - BACKED BY YEARS OF COMMUNICATION EQUIPMENT EXPERIENCE - WORLD'S LARGEST PRODUCER OF 2-WAY MOBILE EQUIPMENT.

F - L - A - S - H ! !

TWO-METER MOBILE HAMS, HERE IT IS!

Motorola FMTU-15V-ARS Mobile FM transmitter, 15 watts output for operation on 144-148Mc. Complete with tubes, crystal, power-supply, military microphone, control-head, cables and roof-top antenna. Crystal for 147.5 Mc. Mobile Net. 15, only. \$145.00
ORDER NOW FROM "THE VHF NEWS" OR FROM ADDRESS BELOW.

250-WATT, OUTPUT, FINAL AMPLIFIER FOR TWO-METERS. USES 4-125s IN PUSH-PULL. SILVER-PLATED LONG LINES IN PLATE AND GRID. IN METAL CABINET FOR RELAY-RACK MOUNTING. ONLY ONE AVAILABLE, NOW. (LESS TUBES AND BLOWER). \$50.00

P-7253 spring base rear-mount antenna. \$22.50

MOTOROLA P-69-13-ARS receiver with special noise limiter for use with any converter having 1500-3000 KC \$60.00

3-30 famous Gon-set converter complete to connect to the P-69-13-ARS receiver \$39.95

P-327-E Fire-wall loud speaker \$5.00

The above comes complete with all necessary accessories and mounting hardware. Order direct or through the Motorola National Service Organization member in your area.

WATCH "THE VHF NEWS"

FOR MORE EQUIPMENT AND PARTS TO BE OFFERED FOR SALE IN
THE NEXT ISSUE

Write or Phone

HARRY HARRISON
W9LLX
MOTOROLA INC.

1327 W. Washington Blvd. Phone: TAYlor 9-2200, Ext. 161, Chicago, Ill.

W3RUE REPORTS FROM PITTSBURGH, PA.

Two meter activity has been very poor, all winter, in this area except for W3NKM W3PGV W3KWH W3MMV W3CTN W3JAV and W3RUE. Out-of-towners W3MON RWG W8EFP W3LNA W8SR WJC BFQ WXV and WSE helped, too.

On April 2nd, W8WXV and W3RUE contacted via Aurora. April 10 was better, when W4AO W3AIR came through. W2RPO broke through for a contact on April 12. A 4-way with the Michigan gang was had on April 24th when W8GJF DUL TBS tied up with W3RUE. On May 1, W3JFP, Williamsport, Pa. and W2NLY, W2PAU, New Jersey, worked W3RUE. May 4 brought W4BCT W3AIR and W3OWN. May 7 was even better, with W8WRN CPA W4JDN OXC W8LPD TOJ and W9FVJ coming thru.

W3IWN is on 2 at Segal, Penna., with a new beam. W3TIF-LSE, Johnstown, put in an appearance on 2 on May 19. W3PGV has his 16 element beam back up. W3CTN still uses NBFM. W3JAV, on 2, worked W3NKM, at the Steel City Club QTH, on 420 Mc., about 7 miles. W3RUE also worked W3NKM, crossband, at about 9 1/2 miles, on 420.

W3RUE's 1950 score: 10 states on 2: Ohio, Pennsylvania, W. Virginia, Maryland, Virginia, Illinois, New Jersey, New York, Kentucky and Michigan.

* * *

W8WJC REPORTS FROM EVERETT, OHIO. .

On June 1, W8WJC got plain lucky and snagged W3ASD, Delaware, for a new state, as did W3RUE and W8BFQ. Karl is using horizontal polarization and listens towards this direction at about 2100-2300EST, each night. He'll probably be quite enthusiastic about it all for some time. We think this is the first Ohio-Delaware contact on 2, but are open for argument.

W4AO BCT W3AIR and OWW have been trickling through, occasionally. We worked W9s NZ and ZHB, May 27; where were the rest of you fellers, that night? (W9NFK called until blue in the plates, as did one or two others; band generally quiet, activity-wise-Editor). We hear, via the grapevine, that W3QKI worked Virginia, on Aurora, Sunday morning, early, which would give Herb a new state, too.

Present activity indicates fb year!

TWO METER TOPICS IN TEXAS

By: John N. Naff

Most of the 2-meter stations in this area are now on horizontal, and it seems to be paying off.

W5AOA, Sulphur, La., is a new station. He has a 16-element beam 58 feet high, a 522 transmitter and a receiver similar to the BCL068A (BCL267?). His 4th contact, on his first evening on 2, was W5VY, San Antonio! W5VY really has a tremendous signal when the band is open, at all. His 800 watts really gets through!

On May 2, W5JTI, Jackson, Mississippi, came through with a good signal and was worked by W5SM, W5DSB and W5QIO; W5JEW also hooked W5JTI. The gang was in QSO with New Orleans and Baton Rouge, La., when W5JTI broke through.

Now, all Beaumont stations are laying for W4HHK, Collierville, Tenn.!

Amos, W5JEW, has been in the hospital, but is out and back on the air, again. He has an 829B final, and it seems to work very nicely.

On May 17th, the 2-meter band opened to the west. W5QFA and MX, Corpus Christi, came through well. DAA, of Kingsville, was heard and worked by W5QIO. W5JJY and W5VY, San Antonio, really came through with fb signals. W5DSB worked W5QNS on both 6 and 2 meters. W5SM was on for a while. W5JEW did very well.

The next morning, the band opened to the north. Dallas stations were heard and worked. I believe this is the first contact with Dallas, on horizontal.

W5AEN was worked by W5SM, DSB; and, QIO worked KMJ and AQS. DSB also worked W5MWW, New Boston, Texas, 8 miles from Oklahoma, near Texarkana!

W5DDS, Galveston, seems to have deserted the ranks. W5CNH, BCF, PJX and FCD are active, now and then, on 2 in Port Arthur.

Quite a bit of 6 meter activity was observed during the month. W5QAE has his 6-meter beam up, and has a 522 on 6. A very good opening was noted on May 10th. The band was open until 11 PM. W5DSB and FFM were the active stations on 6. We had a nice vacation, enjoyed scenery and new country.

W5FEK REPORTS FROM HOUSTON, TEXAS..

Very few openings occurred in the late part of May, but W5FSC NZX and FEK listen every morning and night.

FSC, "Bud", one of our outstanding 2 and 6 meter DX men now has a 15-element beam: 2 4-element sections stacked 5/8-wavelength high and 1 wavelength apart, side-to-side. It's about 40 feet in the air. NZX uses a conventional 15 element beam, while FEK uses a 15 element array comprised of 3 5-element sections stacked 1/2-wave apart. It'll be up to 45 feet, soon.

Note to WOPK: W5FSC is our nomination for "The Station Of The Month". Bud was the first W5 to work South America on 6, and has made most of the first out-of-town contacts here on 2. He's an old-timer on v.h.f., being active on 5 before the war.

Stations in San Antonio (200 miles) Victoria (90 miles) and Beaumont (90 miles) are worked often enough to consider them as locals, almost.

Day by day activity on 2: 4/23 W5s FEK NZX to JBW; ONS to FEK; NZX to BDT and VY. 4/24: FEK to AXV EWQ JLY ONS. 5/2: FBT to DXB JTI JBW MKP ML KMJ. 5/3: FBT FEK to BDT; FBT to CNE. 5/4: FBT NZX to BDT. 5/7: FBT FEK to AQA, Sulphur, La. FBT to ONS VY. 5/8: AQA to FEK; FBT to BDT. 5/13 & 14: FEK NZX to VY. 5/17: FBT IRP FEK to AQS, Palmer, Texas; FEK IRP NZX FSC to QFA, Corpus Christi; FBT FEK IRP NZX to MX and PNT, Corpus Christi; FBT and IRP to DAA, Kingsville; FBT to BDT, Austin; FBT IRP to JLY, San Antonio; FBT NZX to VY ONS; IRP to KMJ; FBT NZX to JBW. 5/18: FEK IRP to BDT AQS JLY; FSC IRP FEK to KMJ; NZX FEK to AQA; IRP to ONS AEN, Dallas; FBT to MKD. 5/23: FBT IRP FEK to VY; FBT FEK to JLY. 5/25: FBT to ML, Oil City, La., ONS, Victoria, Texas; FEK to JBW. 5/27: FBT FSC FEK to IRP, Lufkin.

W5IRP, a medical student at Baylor, is active again in Lufkin, where he will be on 6 and 2. He usually operates on 144.8. Bob, a very active man on 2, will be missed in Houston. Bob's frequency, 144.8, reminds us to caution you DX fellows to tune the band! The present DX record on 2 was almost missed, last year, because

that WØ's converter wouldn't tune up to the high-end, where the W4 operated! There's more activity than you'd think, above 144.5 Mc., or even 145! (Yup! - Ed.)

Bud, W5FSC, reports only 3 openings on 6. On April 27, he worked XE1GE and XE1QE. May 6, he QSO'd W8QYD, W5VWU, WØMVQ, PKD, ELL, W7KCP, who would like the 6 meter bunch tune higher in the band; and W7ILL. May 10th, Bud worked W9HGE W2MEV W3GVV W3OJU VE3AJJ AET ATB VE8EAG VE3BOW AIB and DSW, the first W5 contact for several of them. IRP worked W5VWU and WØELL on May 6.

* * *

W3OWW REPORTS FROM STEWARTSTOWN, PA.

The 2-meter band was in excellent shape on May 27, Saturday night, and Sunday morning. At about 12:15AM, May 28, W2QED, Seabrook, N.J., vertical, came thru to W3OWW, on horizontal. Conditions must have been excellent, because signals were S9 plus, both ways. W2QED, on 420, had a 32 element vertical array, while W3OWW has a 26 element beam. Both stations attempted a cross-polarized contact on 420Mc, without success. So, Ken volunteered to turn his 32-element beam horizontal, and try again on 420. So, with Ken's brother holding the beam horizontal, on the roof, we called him and heard him come back S9 plus, reporting W3OWW S9 plus! An FB 10 minute QSO S9 was had on 420, Ken's brother still holding the antenna at W2QED! Further tests will be made when the boy doesn't have to hold the antenna! W3OWW's first 420Mc. contact covered 85 miles, using an 832A tripler, 7 w. out, to a 20-element Yagi 65 feet high. Receiver is an APS-13. W2QED used p.p. 703As, 50 watts input, to the 32 element beam. W3OWW used 300-ohm twinlead; W2QED used open wireline. The path, altho not the best, wasn't the roughest.

W4JHC, Buckroe Beach, Va., has held schedules successfully with W3OWW since May 15 at 12:15AM, EDST, on 2. No failures, at this writing, even tho' the path is 187 miles. Signals varied from weak and fading to S9 plus. W3OWW now has a new 160 element Yagi, a decided improvement over the 6-element.

In Baltimore, Md., W3JFX KWU OUX are 420Mc. enthusiasts, from 'way back, but we haven't worked 'em, yet.

BADGER MILK RUN

By: Vic Tresidder, W9TQ

The meeting at Wisconsin Rapids, on April 29, did not have as large a turn out as at Wausau, two weeks earlier. Our suggestion was that, since both locations are nearly central in the state, it would be best to have one meeting in spring, the other in the fall. Two meetings per year for the state is something deserving a good amount of thought.

W9FPE was slated to talk on v.h.f., but could not do so, because of the job. Sorry!

Visited FPE at his home, Willard, on Sunday, May 30. Had a swell time and learned much. Amazing to see what can be done with practically no tools, except for a small drill, a good soldering iron and good grey-matter! No radio parts store handy, either! The population of Willard is about 100; FPE services radios for the folks in a radius of about 25 miles. He's located where life is rugged, and will show better in the future, as in the past, just what can be done, and how to do it. This is an outline for W9PK who should take it, from here!

In the Rapids, W9BDK is the only 144 Mc. supporter. He's trying to settle r.r. express claim for damage to 522 transmitter shipped by one of the 2-meter gang down east.

Stopped in at Portage to see W9LEW. Oliver is a fine chap; busy building a new home. Altho' only 84 miles out of Milwaukee, and working on v.h.f. county police and public utility equipment, he's not convinced of the possibilities of 144 Mc. Watches for openings; he hopes for, and is thinking of new, much better beam. He has been rather active on 50 Mc. Oliver hopes to hook steady with W9MFR, Madison. Then, together, they may get more fellows going.

The big wind clipped a few beams in Milwaukee. KQM and BTI lost theirs. AFT had to replace mast; beam was over so far the elements were almost vertical! TQ's, bad since end of January, now repaired and working OK, so they tell me. Thank you!

No word from Green Bay, Manitowoc, Appleton, Neenah or Sheboygan. QRK?

Heard or worked, out of state: W9JBH IWE CGR QKM UMG TKL TGI RHL MMG KCW NWNFK BVM DXX GYZ AQP KJU EXH W8AKR and W8MRK. W9AFT can add to the list.

Schedules with W9GJE, Racine, to TQ continue, as does the Monday night party line with W9BTI (19 months, now). Others are certainly welcome.

What happened to the Racine gang, who had a good start? No noise from WWH for so long! Must be TVI, 5th stage.

BTI is building a W3GV beam. AFT replaced the bent mast, and omitted the 28Mc. beam. Harley is located on one of the 2 highest spots in Milwaukee, 733 feet: 2 reasons for what he hears and works on 2! YFT still gardening, so hasn't made repairs on power supply, yet. YYY back to west coast again for 30 days, at least; business matters; took war department with him. KQM, missing for a while, now back on. FES on at 2200 to 2300 quite often. EFM, hooray! HTJ and our usual lengthy chats. UJM, of teneb. Whaddaya know, W9JPK heard! AFT threatened to use an axe on Carl's TV. MFR, Madison, worked by LJV and AFT; heard by BTI and TQ (and Chicago area stations - Ed.)

HDB, Valparaiso, Indiana, discussing 5-element beams with W9MFR, Madison. LEW, Portage, no-go, yet. BTQ out of town, plenty, but gets on when in. Miss AVF, often. DYZ trying to get 829B going. GGH working on improvements. Will compare Wallman cascade a'la Stacey (W1KIM) converter to ARC 3. Remember, Horace, LJV has had co-ax converter for years. (Wish he'd take time to sketch his accomplishments with converter and 829 final, a'la W9NW!) Newcomers DSL and HDE busy. Missing: LPF NSC EYV PYM and CCZ. (Ed. Note: How about PZS, ESE, PM, DKU, BDQ and many others?) Heard 5th harmonic of EAI's 28Mc. sig; also, W9ATX on the net, Monday nights; AYX 14 miles, airline!

Oh, for something besides fair wx, openings and contests to stir up more activity! (A-men! - Editor).

* * *

IMPORTANT NOTICE !!!

In the circuit diagram of the noise-generator, p. 12, "The VHF News", May, 1950, OMIT THE CONNECTION BETWEEN THE SWITCH, SW, AND THE -150V. LEAD.

TWO METERS, LAST MONTH . . (Cont'd.) See Marge Bowman's column, "Indianapolis Eavesdroppings" for details.

W9FKI reminds you that 4 states were represented at Turkey Run, last year; more expected this year. Ken reports W9s HKI BJA ALU LLA JVC QXL UJ QJV LIR LAW CGZ ZHB FPD EQC IMJ MBI RBI GYZ and FKI present at Starved Rock Hamfest, June 4. W9s SUV HOV K9FAE W9s LIR LAW FVJ EHX GHZ FPD ZHL and JMS are all active on 2.

W5NYH, Lexington, Ky., seriously ill in the hospital, according to W4HHK; drop Moore a cheer-up card!

Ted, W4FJ, Richmond, Va., reports that the Washington, DC, teletype signals, used as 2-meter "beacons" fooled many v.h.f. men on the night of June 4. Altho' the beacons were weak, North Carolina stations roared into the north, working up to W3BSV, Maryland, W4CVQ, Fayetteville, W4DCQ, Clinton, NC, were very active. W4EXY, Bennettsville, So. Carolina, is setting up with power! Ted says that a Florida to up-the-east-coast contact on 2 is in proper prospect, this year!

The picture on our cover is one reason W2NLY was inactive until recently. Jim's beam, and other variations on its theme, will be described in an early issue of "CQ". (Ed. XYL Note: Why didn't the "News" describe it?) (Ed. Note: W2NLY, you take it!)

Jim reports that his new receiver, having everything a ham on 2 might ever think of, is now in operation. He listens to the west with it, quite often, using phone or c.w., 144.05 or 144.12 Mc.

Margaret, W8BFQ, in a last-minute report, says 86 stations, 11 sections were worked in the v.h.f. QSO party; the only 9s heard: W9PK, very well; W9EQC, Aurora, poured in! On June 1, W8BFQ worked W3ASD, Delaware, for state #16!

Alice, W9DXX, our other "Lady of 2" has a beautiful new layout in her station, to be featured soon. But, recurring illness prevented her activity in the contest. Sorry!

W9AFT reports May 2 opening brought W9s TTA BER JBH IWE NZ EQC MAL ALQ, Illinois; HGE, Beloit; CAW, Porter, Ind.; W8EGX ZCH, Michigan; W8BFQ, WXW, Ohio. Stations heard regularly are:

W9s NW JBH BER UMG IMG RHL ZHB NFK YWS GYZ MFR (Madison, Wisc.) HGE BAD GJEHMM DRN CGR and QKM. Harley, AFT, expects to have the p.p. 24Gs on, soon.

W9CAW, Porter, Ind., was able, at last, to announce, last month that his buddy, Don, finally received W9KFW and is on 2. Congrats, Don! CAW reports W8BFQ heard often; W9GDM, Wheaton, is consistent on his nightly skeds with NW. On May 13, Gus hooked new calls W9VQS DPY KFW KJU GGH GDV QKM and W8 EGX. CAW invites you to drop in to see him when you're out on your Sunday drive, or your vacation trip.

Ol' Smoke, W8EFP, is having problems with a 420 final, altho' the tripler works. (W9WGZ, how about giving him a hand? - Ed.) On the 6th of May, W8EFP resumed DX on 2, working W4JDN W0BJL (QSLL?) W0KYM W9FBJ? (FWJ?). Smoke is of the opinion that the boys missed a good night, May 8th, 2215 to 2338.

"The Faithful Few On Two" roll adds VE3AIB DAN DAA AQQ W2CRI, per VE3BOW, whom - it is suspected - is just as faithful. VE3BOW says W2CRI heads his list. Johnny has held a weekly schedule with VE3AQG since last summer; is available, any night, for any tests. He is, according to Norm, the most consistent W2 on the band within range of the VE3 area. VE3DAN and W2CRI, Lockport, NY, also W2EPO, hooked up on 420, recently. (Tell W9WGZ about it, too. - Ed.) Congratulations!

VE3BOW says Six was good on the afternoon of May 6, with all kinds of W4s rolled thru; again, May 10 when VE3BOW worked W5FAL, the first Six-Meter contact for VE3BOW, the 3rd contact was W5FSE, Houston, Texas.

W3QKI, now 5 miles south of Erie, Pa., elevation 1130 ft., runs 200 watts input, with W8UKS' "City Slicker" beam, 70 ft. high. Herb says Aurora skip on 2 was good, May 28, 2AM, when he hooked W4ODG, ex-W3LTQ, Hampton, Va.; also heard W4OLK, ex-W3LTN, but he couldn't use c.w., so no contact. Both were hearing and calling W8WEXV when W3QKI heard them. Herb, W3QKI, says 2 is quiet in Erie; W3WEM on, occasionally; NOJ reactivating; NFR, now and then; ODF teletypes W8WJC, now and then. Herb states that his practical experience on 420 Mc. polarization indicates that horizontal

TWO METERS, LAST MONTH....(Cont'd.) polarization gives stronger ground signal, hence less standing-wave flutter, than does vertical; Herb's findings are seemingly unprejudiced, since he at first preferred vertical because of the simplicity of antennas and installation. (Ed. Note: Herb, how about reporting your 420Mc. results to W0WGZ, whonow edits "The UHF World"? Tnx!) W8WRN ("Carascope" Myers) reports Two good to the north, northeast, east and southwest on May 6 and 7, with signals from 200 miles at a "local" level. W4 JDN OXC PCTMKJ W8ZUR MGA CPA LPD W9BOV NSF ASM VZMLLA and W3RUE were worked, with W3RUE Q55 on a back-of-the-beam QSO. Heard: W8WJC WXV EF (back of beam) K9NAM W0BJL KYF W9GZQ.

W0EMS, Adair, Iowa, inactive most of the winter because of weather, inactivity and house-rearranging, will be on 2, soon, with p.p. 826s and a 16 element beam. Frank hopes someone will be successful in breaking his record with W4JFV, but he'll be protecting it, too! DX-ers: write to Mr. Frank Parsons, W0EMS, Adair, Ia., for schedules.

SIX METERS IN MAY

By: W8WRN and W9PK

On May 7, a short open to Florida from 1045 until 1130AM, EST at W8WRN, who worked W4IUJ, S9; Heard W4LAW, FNR S8. W9PK heard W4FNR QN IUJ W1LLL.

May 10: Band open at 730PM thru 1130 PM when switches were pulled. W8WRN worked W5ATJ MJD W4MS and FXN. Some QSB. W9PK heard W5HTZ W4MS W5ONS JLY QMA VY FXN FSM DSB and CUH. W8WRN heard W5FLQ WX HTZ VY PEQ CUH VV LF EKU QNA DC KKZ FAL DXB QMA ONS W8KZT and a lonely W0UMQ, weak. On May 27, W8WRN caught a quickie to W0ELL at 1115AM; band folded immediately afterward, as W8UZ couldn't get through. W0ELL reported that he has his 32 element up for 2 and will be active all September for a new record.

On May 20, PK heard W4IUJ, W1GJZ/1; worked W1CTW, RO. May 27, Aurora opening, the best this year! Heard VE3-AET W9MBL beacon, W8NQD CMS W9AQQ W4 OXC W8WRN W9VZP W2AMJ W3NKM W1FAX; worked W4REK W0QIN. Band open 9 hours; heard W9MAL, with the BC639 on 2!

W9PK found the band open all day, May 28. Worked W5QVQ AJG VY ZZF; heard many others, ONS PKS QIC JLY NU, etc.



"Audi alteram partem"
(Hear the other party; hear both sides.)

EDITED AND PUBLISHED BY:
BILL MC NATT, W9NFK
FRANKLIN PARK, ILL.

Subscription Rates: In U.S.A., Possessions and Canada, \$2.00 per year. Elsewhere, \$3.00. Single copies of current Volume, 35¢ each. Please do not send stamps.

All editorial contributions will be appreciated, and should be mailed on or before the 25th day of the month for publication in the next issue.

CORNER REFLECTIONS . . .

This issue of "The VHF News" marks the end of four, solid years of publishing it and its first year predecessor, "The Midwest VHF News".

Even tho' we've explained, in these pages, that "The VHF News" is a no-income effort, we still come across readers who think that it supports a family of four! It's the other way, Mister. The XYL and I support "The VHF News"! If we tried to pay ourselves even 50¢ per hour for our work on it, its treasury would have gone broke long ago! That's why we would like you fellows to encourage every v.h.f. operator you know to subscribe to "The VHF News".

Until the treasury is substantially in the black, we'll have to minimize costs by heavy editing. Advertising income is hard to derive because our circulation is small; our circulation is small because we haven't the means to advertise the "News" widely. That's where you can help out, by asking your v.h.f. friends to support the one publication devoted exclusively to v.h.f.

If the situation doesn't improve by winter, we'll have to discontinue "The VHF News". We never expected to make money from the paper; that was not our goal. But, we do feel that it should payus for our time and effort, especially after four years of hard work! Don't you agree? 73!

THE UHF WORLD

By: Arnold Bucksbaum, W0WVZ

There seems to be a large number of amateurs interested in the 2/3 meter band. Almost every two meter man I talk to is investigating the equipment available. In the Chicago area, quite a few of the 2-meter old timers are active on 420 Mc.

I will have to hear from you fellows in order to write this column, so please get into the habit of dropping at least a postcard to me before the 15th of each month.

In Des Moines, W0QHA is doing some construction work on a pair of 8012s. I visited with W0HAQ after a recent IRE meeting; he is interested in a receiver for 2/3 meter, and looked over my CPR-46ACJ ASB-7 receiver, which is still unconverted. Building 4X150A coaxial plate circuits are: W0QHC, Minneapolis, and W3BSV, Salisbury, Maryland.

At Collins Radio Co., Cedar Rapids, Ia., data is being collected for the Bureau of Standards on the field strength of a 412Mc. signal over a period of many hours. A resnatron transmitter with a power output of 23 kw. into a pyramidal horn is situated at Cedar Rapids. (A resnatron is a vacuum tube which has coaxial or cavity-type plate and grid circuits, with the elements of the tube constructed directly in the cavity walls.) During the winter months, the signal strength was recorded automatically in weekly periods, approximately every other week, for a total of 1162 hours. The receiver and recording equipment were located at the transmitter site of WHO, just east of Des Moines, Ia., a distance of 86 miles from the resnatron transmitter.

All of the data recorded have been averaged for each hour of the day in terms of the percentage of the total time that the signal is at a certain number of db above one microvolt per meter. The level of the signal receivable 50% of the time was approximately one db above 1 uv/m with respect to 1kw. radiated from a dipole. The signal strength receivable 50% of the time was about 12db above that receivable 90% of the time; that receiv-

able 10% of the time was approximately 24 db above that receivable 90% of the time; the signal receivable 1% of the time was 37 db above that receivable 90% of the time. There was little variation from the above levels over the 24 hour day, except for the curve of the signal receivable 1% of the time. The peaks of this curve would indicate the most likely time during the winter for ducts and inversions to occur. In the 1% curve, a high peak appears at 11AM; however, this is not the whole story since a duct may occur anytime of the day or night. The 50% curve gave some interesting information. From 8PM to 9AM, the signal level is constant, but from 9AM to 8PM, a drop of 2 db in signal strength can be expected.

Measurements are being taken at Quincy, Ill., at present. In general, the signal strength over the 134 mile path is not noticeably weaker than observed over the 86 mile path to WHO.

For anyone constructing a receiver and living in the Cedar Rapids - Quincy path the signal from the resnatron transmitter will make an excellent marker frequency. The transmitter is on the air continuously every other week.

In looking over the surplus market for a receiver for the 2/3 meter band there is one which is particularly outstanding. Built for the series ASB 7 aircraft equipments and called the navy type CPR-46ACJ receiver, it tunes from 509 to 556 Mc. by adjusting the frequency of the high frequency local oscillator. A 2C40 coaxial rf amplifier, a 2C40 converter, and another 2C40 in a parallel line local oscillator are other receiver features. Two stages of 55Mc. i.f. amplification and three stages of 16Mc. i.f. amplification give an overall receiver bandwidth of about 2Mc. In the output there is a detector and video amplifier.

I have not seen one of these receivers in operation in the 2/3 meter band, but information available indicates that the r.f. amplifier and converter grid circuits will tune the band, and that the local oscillator

(Continued on next page, Col. 2.)

INDIANAPOLIS EAVESDRIPPINGS

By: Marge Bowman, XYL-W9GLW

DON'T FORGET: TURKEY RUN, JULY 30, 1950, YOUR VHF PICNIC. For further information, drop a postcard to W9 FVJ, Sam Miller, Toledo, Illinois. Sam has a tentative line-up of W8s ZUR WJC BFQ CYE, W4s JDN MKJ FBJ HHK LLR, W0BJL, W9s ZHB UIA LLA ASM EWO and who else? (Ed. Note: W5JTI, W9s CAW RHL HDB DLI DHJ DPY LLX BQC NFK are prospects; who else?) Come, enjoy yourself and meet many of your Two Meter friends and make new ones.

Whatta month was May! All types of openings from solid to Aurora flutter, which brought 16 newly-heard calls to this QTH: W0BJL, KYF, W9NZ BQC HDB IFX TW, W8EGX LPD BFQ BHC BTH? or VTH? DUL WXV, W3QXI and W2 RPO! And the signals were spread out from 144 to 146Mc!

5/2: Started out with a population of W9FWJ UNS ZHL LLA JMS GLW W8CYE W9LWN ASM EWO NSF W4MKJ OXC W8LPD, Cincinnati, 145.7 Mc., 5-over-5.

5/3: GOSH! Two days in a row: NSF QSO with W8WXV WJC BFQ, with W9JMS UCH EWO UDD VXR GZQ W4JDN W9GLW and HKQ, who reports working Missouri-Kansas border station.

5/6-7: Aposiesto to "Orbit" (W9IMQ) W9GLW has "Creeping Gizmo" in the x-mitter, which no doubt brought all of this barreling in: W0KYF vs W8LPD W9LLA W8EP and W9NSF; W0BJL working W8LPD W4MKJ JDN and W8BTH?; W4JDN with W9ASM VXR W8EP and WRN; W8BMC hooked W9NSF and FVJ, who QSO W3RUE W9VGD W8?TH and W8CPA. W4OKC W9DOK and K9NAM, and other rare combinations helped!

5/9: A rare night, indeed! Opening to the north: W9HDB W9DXX (hey, that's Alice!) RHL UCH Michigan W8s EGX DUL and NRU working central Indiana.

5/10-26: Wha! Hoppen? Afew locals, the Muncie gang. Talk of 220 Mc. work by EWO and AQQ. A poet in our midst is LWN and his favorite subject. LLA giving the Hoosier Poeta a run for his money! EWO, with over 100 straight nights of work, sorta droopy. GLW still struggling with creepin' grid drive. . . . practically rebuilt that 522! G'r'r'r'r'!!

5/26: ASM bemoans last night's brok-

en contact with UIA (Evansville) - 1st time heard, here. UCH calling W8ZUR; GSY DOK JMS EWO LWN W4OKC busy. Roundtable: ASM LLA VGD NSF and GLW complete the evening.

5/27: EWO goes strong to W9s SUV HKQ MBI NW NFK TKL NZ ZHB; heard W9TQ and W9AFT. As Norm took off for work, W9 GLW heard W2RPO with Aurora flutter, GLW's beam northeast, about 10:45CST, in QSO with W8WXV. GLW called W2RPO onc.w. during 1/2 hour of fluttery c.w. signals from all over. No-soap. W9EGH, UCH and LIR heard, too. Then, silence. GLW went to bed. At 11:45, W8WXV W3QXI and others heard, jittery, and too fast for me to copy, for 15 minutes. At 1215 and 1245, for 5 and 15 minutes, signals were of the Aurora-type. Between those times, signals were solid when the beam was turned directly toward the station. Watching W8WXV's signal was an absolutely fascinating experience. At 1AM CST, WXV and WRN were rock-steady in signal strength. Another W3, as I copied him, was W3-BYF; could it be? What do the propagation experts say about that opening?

5/28: Yep, she's still open, and are the locals sorry they weren't on! LLA LWN EJH AQQ. W9FWJ and W4JDN swapped reports, and EWO picked off W4JDN, W9AQQ and W9EQC, Aurora, Ill.!! Lo! Who's that, up solate? ZHB, no less, but no info on what he worked!

5/29-31: Central Indiana has awakened! EWO JMS VGD ZHL GLW ASM LLA LWN NSF IFX IQG and TE await your calls! "Get off the bottom of the band!", says LLA, now to be found at 145.32. May June be just as busy!

THE U H F WORLD . . . (Continued) . frequency may be lowered. Conversion information will be appreciated from anyone now using the CPR-46AGJ.

Please report all u.h.f. activity to Arnold Bucksbaum, 1151 Bever Avenue, Cedar Rapids, Iowa.

CORRECTION . . . "Operating The 4X150A Tube in the 2/3 Meter Band", "The VHF News", May, 1950, page 8, column 2, line 4 should read, "from a theoretical 1/2-wavelength. . ." It was a typographical error.

WOMNQ REPORTS FROM KANSAS CITY. . .

During the first part of the month there were several occasions when conditions looked favorable for more than normal range transmissions. However, nothing out of the ordinary was produced for the Kansas City gang. In fact, little activity seems to exist within a radius of 100 to 200 miles from Kansas City. Little has been heard from W0DSR, Greenleaf, Kansas, and nothing from the rest of the Kansas gang during the past month. St. Joseph has been off the vhf map since W0RNC returned to the army, but the KC gang is working on W0IAC to come back.

On Sunday, May 21, weak phone signals from the Wichita direction were heard at 144.45, but could not be copied well enough to identify. From the north, nothing has been heard from the Iowa gang since early winter.

W0DRW has been taking a lot of ribbing about "TV". His XYL won a TV set about a month ago and, since that time, Frank has been late getting on at an evening. But, the cause is not TV! W0AE was the speaker at the last "Heart of America Radio Club" meeting. George presented a collection of old time radio gear. The hit of the evening was some electrical gear, complete with the spiel used by a medicine man to estound the public some 100 years ago. It should be an interesting show if we could get George to repeat the show on 2 meters.

At the club spring party, almost everyone came away with a prize. W0 DVV really hit the jack pot. Ned took his whole family, and all four won! Several of the v.h.f. fellows won low-frequency components and, sure enough, a c.w. man won a mike and a phone man won a bug. The new Inspector was present and won a prize, too; he's an active ham, but not on v.h.f. This same evening was the first this year that W0DVV was unable to make a contact on Two!

W0DDX and MNQ have the 220 Mc. gear broken in, now, and have found a new use for it. For some time, W0JZN and DVV have had difficulty in hearing each other because of JZN's fixed-beam being at right angles to DVV's when

all four stations were in a round-table. The new procedure is: WOMNQ goes on 220 and rebroadcasts both JZN and DVV to W0DDX who, in turn, re-transmits the 220 sigs on 144Mc. Now, Ned and Bob can carry on a 100% QSO via 220 and 144 Mcs. The logging and calling procedure for such a QSO gets rather complicated.

Now that June is here, we hope to have more to report next month in both activity and extended-range contacts.

W0ELL REPORTS FROM DENVER, COLORADO

Since returning from another business trip, W0ELL has added a new 32-element beam and has finished the cascode crystal-controlled converter. I now feel that W0ELL is all set for the two-meter DX season.

Schedules have been resumed with W0 FRQ, Ft. Collins, (60 miles), worked nightly, and W7OWZ, Cheyenne, (100 miles), heard almost nightly, but not yet worked from his home location. On Sunday mornings, a Colorado-Wyoming get-together is held with W7 MVK, Laramie, and W7OWZ operating mobile from hills near their homes. W0FRQ, Ft. Collins, and W0ELL hold down the Colorado end, with W0ACA and W0CYO on, sometimes. W7MVK mobile, with an ARC-4, usually runs S9, while W7OWZ, with 180 volts to an 832A, runs S3. W0DNW, North Platte, Nebraska, is on with a pair of 4-125As, and a crystal-controlled cascode converter. He has one problem, however: his landlord doesn't like antennas.

A VHF get-together was held on June 4 in North Platte in connection with the local hamfest. Colorado, Wyoming, western Nebraska and western Kansas v.h.f. men were to attend. More on this, later.

Wanted: Schedules on 40 meters with midwest v.h.f. men, or 40-meter hams interested in coordinating v.h.f. DX attempts. Only a few minutes of time would be required. Between W7OWZ, W0 FRQ and W0ELL, a satisfactory schedule can be held with mid-western stations. If you schedule through a 40 meter friend, be sure he is informed of band conditions on two for each contact. This will be mighty encouraging to W7OWZ, W0FRQ and W0ELL. 73!

IN AND AROUND CHICAGO . . .

The gang is beginning to think that W5CVW's "iron curtain" on openings has been moved to the Chicago area.

May 3, W9AFT, Milwaukee, was working W8BFQ and other DX, none of which could be heard in the Chicago region. Early in May, W9HKQ, DeMotte, Ind., had worked into St. Louis; not heard. On other occasions, W8WXV, YEG DUL and others were known to be on, beamed Chicago way, but unheard except at locations such as W9TKL, W9EQC and W9JEB. We don't seem to get the atmospheric conditions that prevailed a year ago, this time.

W9TGI and W9DRN enjoyed a 144-1250 Mc. crossband contact. DRN used an APT-5 and a parabolic antenna indoors, 7 feet above ground, received by TGI with an APR-5 and broad band antenna. KFK, Deerfield, has been copying W9CEW's p.p. 6J6s on 420, also W9IWE, DRN and, of course, TGI, who is always S9 plus.

W9MFR, Madison, Wisc., made the boys perk up their ears when he worked W9HDE, Valparaiso, Ind. INE, Zion, Ill.,

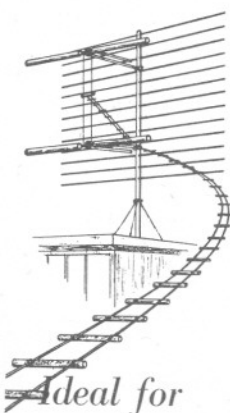
is active as are NW GDM EQC HKS CEW VX DKX EXQ WIO SXJ CEW PEN EDG QJO CGR BADBVM. The 147.5 FM net grows: W9LLZ QM LLLX NFK CEW SAKRAY ZYF are active; Mobiles: LLLX SAK NFK to be joined by RAY LLZ CEW SXJ HPJ.

The last QNO meeting was held at W9 WOK's home, Bensenville. The gals enjoyed the evening immensely. Members will be notified of next meeting.

NEW VHF SCOREBOARD STANDINGS				
Call	States	CA	DX Miles	Other
W8WJC	19	7	700	VE3
W8BFQ	16	6	700	VE3
W5CVW	4	2	570	
W4HHK	11	5	650	
W9FVJ	13	6	580	
W1OCP	9	3		VE1
W4CXC	8	4	470	
W5DSB	2	1	321	

(Report your standing to W9CEW)

Qued Electrical Supply will renew its advertising in our pages next fall, according to Ben Cohn, who invites you to visit his newly-arranged showrooms, 1650 N. Damen Ave., Chicago.



"GONSET LINE"

LOW LOSS OPEN WIRE LINE

1/6 THE LOSS OF NEW MOLDED RIBBON

"Your antenna is no better than its lead-line."

The new GONSET LINE is the answer to television and amateur lead line requirements. Its extremely low loss (lowest loss line manufactured) makes it ideal for any lead in use where highest efficiency is desired. The loss of GONSET LINE is less than 1/6th that of ordinary molded 300 ohm ribbon (when new) and still less when molded ribbon ages. GONSET LINE utilizes air for insulation, with polystyrene for spacers every 6 inches.

Due to air insulation and polystyrene spacers it is practically not affected by weather such as ordinary molded ribbon. GONSET LINE therefore, is ideally suited for television reception in fringe and beach areas as well as long runs.

The wire itself is 18 gauge double formvar spaced 1". It is packaged with a continuous strip of corrugated paper to make easy handling.

Universal screw eye type of insulators are available that will take either GONSET LINE or ordinary molded ribbon. The impedance is 450 ohms, and will substitute for 300 ohm ribbon. (See reverse side of this page) without any special matching. There are, however, 450-300 ohm transformers available for those who wish to experiment.

• AMATEUR • TELEVISION • COMMERCIAL • FRINGE AREAS • BEACH AREAS

WRITE, TODAY, TO FAUST GONSETT, W6VR, GON-SET COMPANY, 70-72 E. TUJUNGA AVENUE, BURBANK, CALIFORNIA, FOR A COMPLETE TECHNICAL BULLETIN AND AMATEUR AND DEALER PRICES. PLEASE MENTION "THE VHF NEWS" IN YOUR LETTER SO THAT WE'LL KNOW HOW WELL YOU SUPPORT IT.

0.5 DB LOSS PER 100 FT. AT 200 M.C. • POLYSTYRENE SPACERS
GONSET COMPANY, BURBANK, CALIFORNIA

THE VHF NEWS

Bill McNatt, W9NFK
2433 ELDER LANE
FRANKLIN PARK, ILL.

Sec. 34.66, P.L.&R.

U. S. POSTAGE

PAID

Franklin Park, Ill.

Permit No. 25

POSTMASTER: If addressee has moved, notify sender on Form 3547, postage for which is guaranteed.